



Essential Smartbright T5 Batten

BN058C LED11/WW L1200 GM

Essential Smartbright T5 Batten, 13 W, 1200 lm, 3000 K

BN058 Batten provide flexibility to customer to choose from 3 CCT and 4 different size and lumen packages, based on their specific need.

Product data

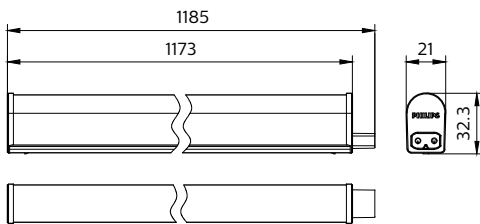
General Information		Temperature	
Light source engine type	LED	Ambient temperature range	-20 to +40 °C
Light Technical		Controls and Dimming	
Luminous Flux	1,200 lm	Dimmable	No
Luminous Efficacy (rated) (Nom)	85 lm/W	Control interface	-
Correlated Color Temperature (Nom)	3000 K	Mechanical and Housing	
Color rendering index (CRI)	>70	Housing Material	Polycarbonate
Light source color	730 warm white	Optical cover material	Polycarbonate
Optical cover type	Polycarbonate	Housing Color	White
Operating and Electrical		Optical cover finish	Opal
Input Voltage	220 to 240 V	Overall length	1,185 mm
Line Frequency	50 or 60 Hz	Overall width	21 mm
Power Consumption	13 W	Overall height	32.3 mm
Power Factor (Fraction)	0.5	Dimensions (Height x Width x Depth)	32 x 21 x 1185 mm
Number of products on MCB of 16 A type B	8	Approval and Application	
		Ingress protection code	IP20 [Finger-protected]
		Mech. impact protection code	IK02 [0.2 J standard]

Essential Smartbright T5 Batten

Protection class IEC	Safety class II
CE mark	-
Initial Performance (IEC Compliant)	
Luminous flux tolerance	+/-10%
Power consumption tolerance	+/-10%
Product Data	
Order product name	BN058C LED1/WW L1200 GM
Full product name	BN058C LED1/WW L1200 GM

Full product code	871016331394899
Order code	911401709522
Material Nr. (12NC)	911401709522
Numerator - Quantity Per Pack	1
Net Weight (Piece)	0.120 kg
EAN/UPC - Product/Case	8710163313948
Numerator - Packs per outer box	24
EAN/UPC - Case	8710163314181

Dimensional drawing





Essential Smartbright T5 Batten

BN058C LED11/NW L1200 GM

Essential Smartbright T5 Batten, 13 W, 1200 lm, 4000 K

BN058 Batten provide flexibility to customer to choose from 3 CCT and 4 different size and lumen packages, based on their specific need.

Product data

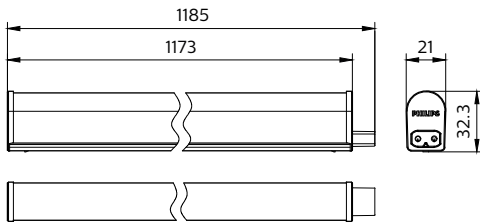
General Information		Temperature	
Light source engine type	LED	Ambient temperature range	-20 to +40 °C
Light Technical		Controls and Dimming	
Luminous Flux	1,200 lm	Dimmable	No
Luminous Efficacy (rated) (Nom)	85 lm/W	Control interface	-
Correlated Color Temperature (Nom)	4000 K	Mechanical and Housing	
Color rendering index (CRI)	>70	Housing Material	Polycarbonate
Light source color	740 neutral white	Optical cover material	Polycarbonate
Optical cover type	Polycarbonate	Housing Color	White
Operating and Electrical		Optical cover finish	Opal
Input Voltage	220 to 240 V	Overall length	1,185 mm
Line Frequency	50 or 60 Hz	Overall width	21 mm
Power Consumption	13 W	Overall height	32.3 mm
Power Factor (Fraction)	0.5	Dimensions (Height x Width x Depth)	32 x 21 x 1185 mm
Number of products on MCB of 16 A type B	8	Approval and Application	
		Ingress protection code	IP20 [Finger-protected]
		Mech. impact protection code	IK02 [0.2 J standard]

Essential Smartbright T5 Batten

Protection class IEC	Safety class II
CE mark	-
Initial Performance (IEC Compliant)	
Luminous flux tolerance	+/-10%
Power consumption tolerance	+/-10%
Product Data	
Order product name	BN058C LED11/NW L1200 GM
Full product name	BN058C LED11/NW L1200 GM

Full product code	871016331395599
Order code	911401709532
Material Nr. (12NC)	911401709532
Numerator - Quantity Per Pack	1
Net Weight (Piece)	0.140 kg
EAN/UPC - Product/Case	8710163313955
Numerator - Packs per outer box	24
EAN/UPC - Case	8710163314198

Dimensional drawing





Essential Smartbright T5 Batten

BN058C LED11/CW L1200 GM

Essential Smartbright T5 Batten, 13 W, 1200 lm, 6500 K

BN058 Batten provide flexibility to customer to choose from 3 CCT and 4 different size and lumen packages, based on their specific need.

Product data

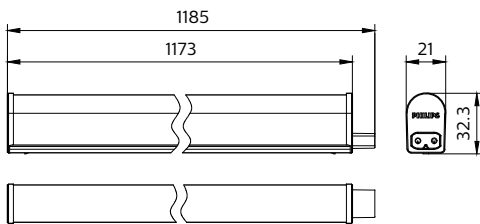
General Information		Temperature	
Light source engine type	LED	Ambient temperature range	-20 to +40 °C
Light Technical		Controls and Dimming	
Luminous Flux	1,200 lm	Dimmable	No
Luminous Efficacy (rated) (Nom)	85 lm/W	Control interface	-
Correlated Color Temperature (Nom)	6500 K	Mechanical and Housing	
Color rendering index (CRI)	>70	Housing Material	Polycarbonate
Light source color	765 cool daylight	Optical cover material	Polycarbonate
Optical cover type	Polycarbonate	Housing Color	White
Operating and Electrical		Optical cover finish	Opal
Input Voltage	220 to 240 V	Overall length	1,185 mm
Line Frequency	50 or 60 Hz	Overall width	21 mm
Power Consumption	13 W	Overall height	32.3 mm
Power Factor (Fraction)	0.5	Dimensions (Height x Width x Depth)	32 x 21 x 1185 mm
Number of products on MCB of 16 A type B	8	Approval and Application	
		Ingress protection code	IP20 [Finger-protected]
		Mech. impact protection code	IK02 [0.2 J standard]

Essential Smartbright T5 Batten

Protection class IEC	Safety class II
CE mark	-
Initial Performance (IEC Compliant)	
Luminous flux tolerance	+/-10%
Power consumption tolerance	+/-10%
Product Data	
Order product name	BN058C LED11/CW L1200 GM
Full product name	BN058C LED11/CW L1200 GM

Full product code	871016331396299
Order code	911401709542
Material Nr. (12NC)	911401709542
Numerator - Quantity Per Pack	1
Net Weight (Piece)	0.140 kg
EAN/UPC - Product/Case	8710163313962
Numerator - Packs per outer box	24
EAN/UPC - Case	8710163314204

Dimensional drawing





Essential Smartbright T5 Batten

BN058C LED9/WW L900 GM

Essential Smartbright T5 Batten, 9.6 W, 900 lm, 3000 K

BN058 Batten provide flexibility to customer to choose from 3 CCT and 4 different size and lumen packages, based on their specific need.

Product data

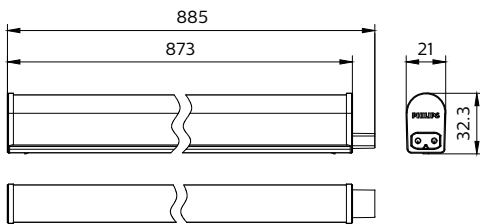
General Information		Temperature	
Light source engine type	LED	Ambient temperature range	-20 to +40 °C
Light Technical		Controls and Dimming	
Luminous Flux	900 lm	Dimmable	No
Luminous Efficacy (rated) (Nom)	85 lm/W	Control interface	-
Correlated Color Temperature (Nom)	3000 K	Mechanical and Housing	
Color rendering index (CRI)	>70	Housing Material	Polycarbonate
Light source color	730 warm white	Optical cover material	Polycarbonate
Optical cover type	Polycarbonate	Housing Color	White
Operating and Electrical		Optical cover finish	Opal
Input Voltage	220 to 240 V	Overall length	885 mm
Line Frequency	50 or 60 Hz	Overall width	21 mm
Power Consumption	9.6 W	Overall height	32.3 mm
Power Factor (Fraction)	0.5	Dimensions (Height x Width x Depth)	32 x 21 x 885 mm
Number of products on MCB of 16 A type B	8	Approval and Application	
		Ingress protection code	IP20 [Finger-protected]
		Mech. impact protection code	IK02 [0.2 J standard]

Essential Smartbright T5 Batten

Protection class IEC	Safety class II
CE mark	-
Initial Performance (IEC Compliant)	
Luminous flux tolerance	+/-10%
Power consumption tolerance	+/-10%
Product Data	
Order product name	BN058C LED9/WW L900 GM
Full product name	BN058C LED9/WW L900 GM

Full product code	871016331397999
Order code	911401709552
Material Nr. (12NC)	911401709552
Numerator - Quantity Per Pack	1
Net Weight (Piece)	0.100 kg
EAN/UPC - Product/Case	8710163313979
Numerator - Packs per outer box	24
EAN/UPC - Case	8710163314211

Dimensional drawing





Essential Smartbright T5 Batten

BN058C LED9/NW L900 GM

Essential Smartbright T5 Batten, 9.6 W, 900 lm, 4000 K

BN058 Batten provide flexibility to customer to choose from 3 CCT and 4 different size and lumen packages, based on their specific need.

Product data

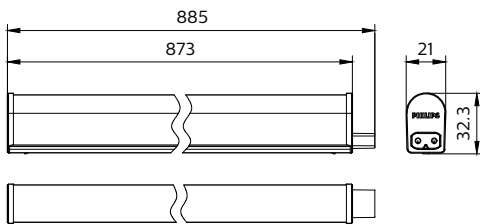
General Information		Temperature	
Light source engine type	LED	Ambient temperature range	-20 to +40 °C
Light Technical		Controls and Dimming	
Luminous Flux	900 lm	Dimmable	No
Luminous Efficacy (rated) (Nom)	85 lm/W	Control interface	-
Correlated Color Temperature (Nom)	4000 K	Mechanical and Housing	
Color rendering index (CRI)	>70	Housing Material	Polycarbonate
Light source color	740 neutral white	Optical cover material	Polycarbonate
Optical cover type	Polycarbonate	Housing Color	White
Operating and Electrical		Optical cover finish	Opal
Input Voltage	220 to 240 V	Overall length	885 mm
Line Frequency	50 or 60 Hz	Overall width	21 mm
Power Consumption	9.6 W	Overall height	32.3 mm
Power Factor (Fraction)	0.5	Dimensions (Height x Width x Depth)	32 x 21 x 885 mm
Number of products on MCB of 16 A type B	8	Approval and Application	
		Ingress protection code	IP20 [Finger-protected]
		Mech. impact protection code	IK02 [0.2 J standard]

Essential Smartbright T5 Batten

Protection class IEC	Safety class II
CE mark	-
Initial Performance (IEC Compliant)	
Luminous flux tolerance	+/-10%
Power consumption tolerance	+/-10%
Product Data	
Order product name	BN058C LED9/NW L900 GM
Full product name	BN058C LED9/NW L900 GM

Full product code	871016331398699
Order code	911401709562
Material Nr. (12NC)	911401709562
Numerator - Quantity Per Pack	1
Net Weight (Piece)	0.110 kg
EAN/UPC - Product/Case	8710163313986
Numerator - Packs per outer box	24
EAN/UPC - Case	8710163314228

Dimensional drawing





Essential Smartbright T5 Batten

BN058C LED9/CW L900 GM

Essential Smartbright T5 Batten, 9.6 W, 900 lm, 6500 K

BN058 Batten provide flexibility to customer to choose from 3 CCT and 4 different size and lumen packages, based on their specific need.

Product data

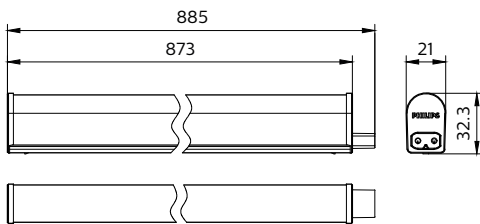
General Information		Temperature	
Light source engine type	LED	Ambient temperature range	-20 to +40 °C
Light Technical		Controls and Dimming	
Luminous Flux	900 lm	Dimmable	No
Luminous Efficacy (rated) (Nom)	85 lm/W	Control interface	-
Correlated Color Temperature (Nom)	6500 K	Mechanical and Housing	
Color rendering index (CRI)	>70	Housing Material	Polycarbonate
Light source color	765 cool daylight	Optical cover material	Polycarbonate
Optical cover type	Polycarbonate	Housing Color	White
Operating and Electrical		Optical cover finish	Opal
Input Voltage	220 to 240 V	Overall length	885 mm
Line Frequency	50 or 60 Hz	Overall width	21 mm
Power Consumption	9.6 W	Overall height	32.3 mm
Power Factor (Fraction)	0.5	Dimensions (Height x Width x Depth)	32 x 21 x 885 mm
Number of products on MCB of 16 A type B	8	Approval and Application	
		Ingress protection code	IP20 [Finger-protected]
		Mech. impact protection code	IK02 [0.2 J standard]

Essential Smartbright T5 Batten

Protection class IEC	Safety class II
CE mark	-
Initial Performance (IEC Compliant)	
Luminous flux tolerance	+/-10%
Power consumption tolerance	+/-10%
Product Data	
Order product name	BN058C LED9/CW L900 GM
Full product name	BN058C LED9/CW L900 GM

Full product code	871016331399399
Order code	911401709572
Material Nr. (12NC)	911401709572
Numerator - Quantity Per Pack	1
Net Weight (Piece)	0.110 kg
EAN/UPC - Product/Case	8710163313993
Numerator - Packs per outer box	24
EAN/UPC - Case	8710163314235

Dimensional drawing





Essential Smartbright T5 Batten

BN058C LED5/WW L600 GM

Essential Smartbright T5 Batten, 6.5 W, 600 lm, 3000 K

BN058 Batten provide flexibility to customer to choose from 3 CCT and 4 different size and lumen packages, based on their specific need.

Product data

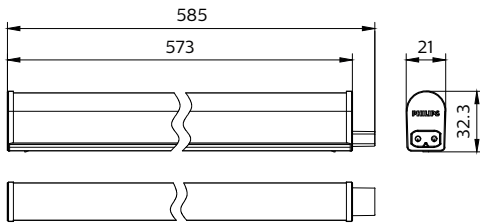
General Information		Temperature	
Light source engine type	LED	Ambient temperature range	-20 to +40 °C
Light Technical		Controls and Dimming	
Luminous Flux	600 lm	Dimmable	No
Luminous Efficacy (rated) (Nom)	85 lm/W	Control interface	-
Correlated Color Temperature (Nom)	3000 K	Mechanical and Housing	
Color rendering index (CRI)	>70	Housing Material	Polycarbonate
Light source color	730 warm white	Optical cover material	Polycarbonate
Optical cover type	Polycarbonate	Housing Color	White
Operating and Electrical		Optical cover finish	Opal
Input Voltage	220 to 240 V	Overall length	585 mm
Line Frequency	50 or 60 Hz	Overall width	21 mm
Power Consumption	6.5 W	Overall height	32.3 mm
Power Factor (Fraction)	0.5	Dimensions (Height x Width x Depth)	32 x 21 x 585 mm
Number of products on MCB of 16 A type B	8	Approval and Application	
		Ingress protection code	IP20 [Finger-protected]
		Mech. impact protection code	IK02 [0.2 J standard]

Essential Smartbright T5 Batten

Protection class IEC	Safety class II
CE mark	-
Initial Performance (IEC Compliant)	
Luminous flux tolerance	+/-10%
Power consumption tolerance	+/-10%
Product Data	
Order product name	BN058C LED5/WW L600 GM
Full product name	BN058C LED5/WW L600 GM

Full product code	871016331400699
Order code	911401709582
Material Nr. (12NC)	911401709582
Numerator - Quantity Per Pack	1
Net Weight (Piece)	0.070 kg
EAN/UPC - Product/Case	8710163314006
Numerator - Packs per outer box	24
EAN/UPC - Case	8710163314242

Dimensional drawing





Essential Smartbright T5 Batten

BN058C LED5/NW L600 GM

Essential Smartbright T5 Batten, 6.5 W, 600 lm, 4000 K

BN058 Batten provide flexibility to customer to choose from 3 CCT and 4 different size and lumen packages, based on their specific need.

Product data

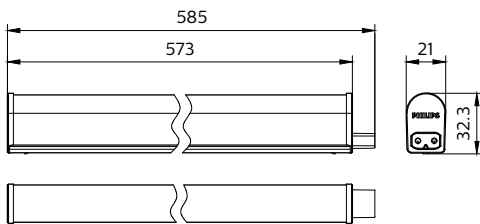
General Information		Temperature	
Light source engine type	LED	Ambient temperature range	-20 to +40 °C
Light Technical		Controls and Dimming	
Luminous Flux	600 lm	Dimmable	No
Luminous Efficacy (rated) (Nom)	85 lm/W	Control interface	-
Correlated Color Temperature (Nom)	4000 K	Mechanical and Housing	
Color rendering index (CRI)	>70	Housing Material	Polycarbonate
Light source color	740 neutral white	Optical cover material	Polycarbonate
Optical cover type	Polycarbonate	Housing Color	White
Operating and Electrical		Optical cover finish	Opal
Input Voltage	220 to 240 V	Overall length	585 mm
Line Frequency	50 or 60 Hz	Overall width	21 mm
Power Consumption	6.5 W	Overall height	32.3 mm
Power Factor (Fraction)	0.5	Dimensions (Height x Width x Depth)	32 x 21 x 585 mm
Number of products on MCB of 16 A type B	8	Approval and Application	
		Ingress protection code	IP20 [Finger-protected]
		Mech. impact protection code	IK02 [0.2 J standard]

Essential Smartbright T5 Batten

Protection class IEC	Safety class II
CE mark	-
Initial Performance (IEC Compliant)	
Luminous flux tolerance	+/-10%
Power consumption tolerance	+/-10%
Product Data	
Order product name	BN058C LED5/NW L600 GM
Full product name	BN058C LED5/NW L600 GM

Full product code	871016331401399
Order code	911401709592
Material Nr. (12NC)	911401709592
Numerator - Quantity Per Pack	1
Net Weight (Piece)	0.080 kg
EAN/UPC - Product/Case	8710163314013
Numerator - Packs per outer box	24
EAN/UPC - Case	8710163314259

Dimensional drawing





Essential Smartbright T5 Batten

BN058C LED5/CW L600 GM

Essential Smartbright T5 Batten, 6.5 W, 600 lm, 6500 K

BN058 Batten provide flexibility to customer to choose from 3 CCT and 4 different size and lumen packages, based on their specific need.

Product data

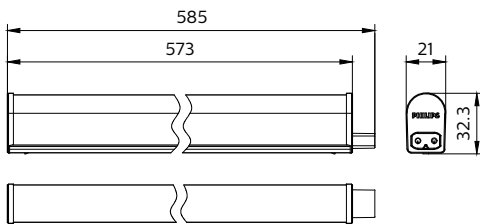
General Information		Temperature	
Light source engine type	LED	Ambient temperature range	-20 to +40 °C
Light Technical		Controls and Dimming	
Luminous Flux	600 lm	Dimmable	No
Luminous Efficacy (rated) (Nom)	85 lm/W	Control interface	-
Correlated Color Temperature (Nom)	6500 K	Mechanical and Housing	
Color rendering index (CRI)	>70	Housing Material	Polycarbonate
Light source color	765 cool daylight	Optical cover material	Polycarbonate
Optical cover type	Polycarbonate	Housing Color	White
Operating and Electrical		Optical cover finish	Opal
Input Voltage	220 to 240 V	Overall length	585 mm
Line Frequency	50 or 60 Hz	Overall width	21 mm
Power Consumption	6.5 W	Overall height	32.3 mm
Power Factor (Fraction)	0.5	Dimensions (Height x Width x Depth)	32 x 21 x 585 mm
Number of products on MCB of 16 A type B	8	Approval and Application	
		Ingress protection code	IP20 [Finger-protected]
		Mech. impact protection code	IK02 [0.2 J standard]

Essential Smartbright T5 Batten

Protection class IEC	Safety class II
CE mark	-
Initial Performance (IEC Compliant)	
Luminous flux tolerance	+/-10%
Power consumption tolerance	+/-10%
Product Data	
Order product name	BN058C LED5/CW L600 GM
Full product name	BN058C LED5/CW L600 GM

Full product code	871016331402099
Order code	911401709602
Material Nr. (12NC)	911401709602
Numerator - Quantity Per Pack	1
Net Weight (Piece)	0.080 kg
EAN/UPC - Product/Case	8710163314020
Numerator - Packs per outer box	24
EAN/UPC - Case	8710163314266

Dimensional drawing





Essential Smartbright T5 Batten

BN058C LED3/WW L300 GM

Essential Smartbright T5 Batten, 3.4 W, 300 lm, 3000 K

BN058 Batten provide flexibility to customer to choose from 3 CCT and 4 different size and lumen packages, based on their specific need.

Product data

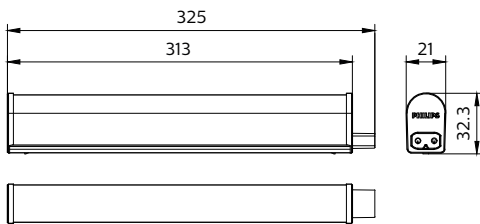
General Information		Temperature	
Light source engine type	LED	Ambient temperature range	-20 to +40 °C
Light Technical		Controls and Dimming	
Luminous Flux	300 lm	Dimmable	No
Luminous Efficacy (rated) (Nom)	85 lm/W	Control interface	-
Correlated Color Temperature (Nom)	3000 K	Mechanical and Housing	
Color rendering index (CRI)	>70	Housing Material	Polycarbonate
Light source color	730 warm white	Optical cover material	Polycarbonate
Optical cover type	Polycarbonate	Housing Color	White
Operating and Electrical		Optical cover finish	Opal
Input Voltage	220 to 240 V	Overall length	325 mm
Line Frequency	50 or 60 Hz	Overall width	21 mm
Power Consumption	3.4 W	Overall height	32.3 mm
Power Factor (Fraction)	0.45	Dimensions (Height x Width x Depth)	32 x 21 x 325 mm
Number of products on MCB of 16 A type B	8	Approval and Application	
		Ingress protection code	IP20 [Finger-protected]
		Mech. impact protection code	IK02 [0.2 J standard]

Essential Smartbright T5 Batten

Protection class IEC	Safety class II
CE mark	-
Initial Performance (IEC Compliant)	
Luminous flux tolerance	+/-10%
Power consumption tolerance	+/-10%
Product Data	
Order product name	BN058C LED3/WW L300 GM
Full product name	BN058C LED3/WW L300 GM

Full product code	871016331403799
Order code	911401709612
Material Nr. (12NC)	911401709612
Numerator - Quantity Per Pack	1
Net Weight (Piece)	0.040 kg
EAN/UPC - Product/Case	8710163314037
Numerator - Packs per outer box	24
EAN/UPC - Case	8710163314273

Dimensional drawing





Essential Smartbright T5 Batten

BN058C LED3/NW L300 GM

Essential Smartbright T5 Batten, 3.4 W, 300 lm, 4000 K

BN058 Batten provide flexibility to customer to choose from 3 CCT and 4 different size and lumen packages, based on their specific need.

Product data

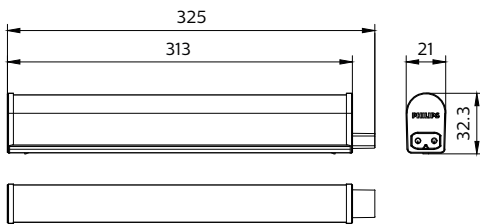
General Information		Temperature	
Light source engine type	LED	Ambient temperature range	-20 to +40 °C
Light Technical		Controls and Dimming	
Luminous Flux	300 lm	Dimmable	No
Luminous Efficacy (rated) (Nom)	85 lm/W	Control interface	-
Correlated Color Temperature (Nom)	4000 K	Mechanical and Housing	
Color rendering index (CRI)	>70	Housing Material	Polycarbonate
Light source color	740 neutral white	Optical cover material	Polycarbonate
Optical cover type	Polycarbonate	Housing Color	White
Operating and Electrical		Optical cover finish	Opal
Input Voltage	220 to 240 V	Overall length	325 mm
Line Frequency	50 or 60 Hz	Overall width	21 mm
Power Consumption	3.4 W	Overall height	32.3 mm
Power Factor (Fraction)	0.45	Dimensions (Height x Width x Depth)	32 x 21 x 325 mm
Number of products on MCB of 16 A type B	8	Approval and Application	
		Ingress protection code	IP20 [Finger-protected]
		Mech. impact protection code	IK02 [0.2 J standard]

Essential Smartbright T5 Batten

Protection class IEC	Safety class II
CE mark	-
Initial Performance (IEC Compliant)	
Luminous flux tolerance	+/-10%
Power consumption tolerance	+/-10%
Product Data	
Order product name	BN058C LED3/NW L300 GM
Full product name	BN058C LED3/NW L300 GM

Full product code	871016331404499
Order code	911401709622
Material Nr. (12NC)	911401709622
Numerator - Quantity Per Pack	1
Net Weight (Piece)	0.050 kg
EAN/UPC - Product/Case	8710163314044
Numerator - Packs per outer box	24
EAN/UPC - Case	8710163314280

Dimensional drawing





Essential Smartbright T5 Batten

BN058C LED3/CW L300 GM

Essential Smartbright T5 Batten, 3.4 W, 300 lm, 6500 K

BN058 Batten provide flexibility to customer to choose from 3 CCT and 4 different size and lumen packages, based on their specific need.

Product data

General Information		Temperature	
Light source engine type	LED	Ambient temperature range	-20 to +40 °C
Light Technical		Controls and Dimming	
Luminous Flux	300 lm	Dimmable	No
Luminous Efficacy (rated) (Nom)	85 lm/W	Control interface	-
Correlated Color Temperature (Nom)	6500 K	Mechanical and Housing	
Color rendering index (CRI)	>70	Housing Material	Polycarbonate
Light source color	765 cool daylight	Optical cover material	Polycarbonate
Optical cover type	Polycarbonate	Housing Color	White
Operating and Electrical		Optical cover finish	Opal
Input Voltage	220 to 240 V	Overall length	325 mm
Line Frequency	50 or 60 Hz	Overall width	21 mm
Power Consumption	3.4 W	Overall height	32.3 mm
Power Factor (Fraction)	0.45	Dimensions (Height x Width x Depth)	32 x 21 x 325 mm
Number of products on MCB of 16 A type B	8	Approval and Application	
		Ingress protection code	IP20 [Finger-protected]
		Mech. impact protection code	IK02 [0.2 J standard]

Essential Smartbright T5 Batten

Protection class IEC	Safety class II
CE mark	-
Initial Performance (IEC Compliant)	
Luminous flux tolerance	+/-10%
Power consumption tolerance	+/-10%
Product Data	
Order product name	BN058C LED3/CW L300 GM
Full product name	BN058C LED3/CW L300 GM

Full product code	871016331405199
Order code	911401709632
Material Nr. (12NC)	911401709632
Numerator - Quantity Per Pack	1
Net Weight (Piece)	0.050 kg
EAN/UPC - Product/Case	8710163314051
Numerator - Packs per outer box	24
EAN/UPC - Case	8710163314297

Dimensional drawing

